



MONTHLY MEMBERSHIP PROGRESS REPORT

District 5M 1

Results as of: 6/30/2015

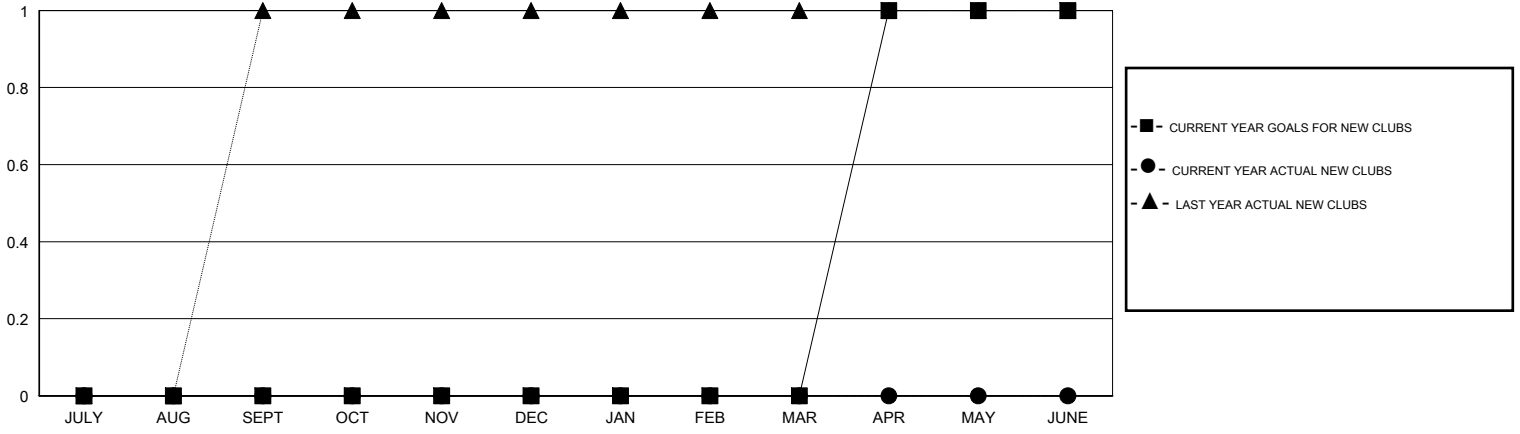
GMT: Judy Hankom

LOCATION MINNESOTA

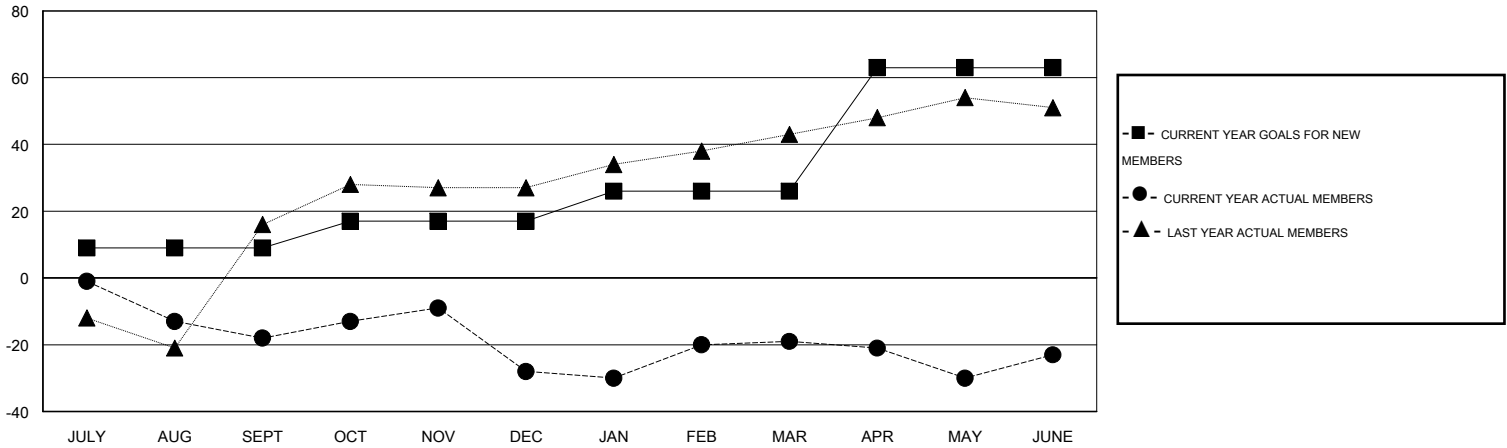
GMT CA 1

Clubs					Members				
RESULTS FOR 2014-2015					RESULTS FOR 2014-2015				
QUARTER	NEW CLUB GOAL	NEW CLUBS	DROPPED CLUBS	NET GAIN/LOSS	QUARTER	NEW MEMBER GOAL	CHARTER AND NEW MEMBERS ADDED	DROPPED MEMBERS	NET GAIN/LOSS
JULY/AUG/SEPT	0	0	0	0	JULY/AUG/SEPT	9	18	36	-18
OCT/NOV/DEC	0	0	0	0	OCT/NOV/DEC	8	44	54	-10
JAN/FEB/MAR	0	0	0	0	JAN/FEB/MAR	9	40	31	9
APR/MAY/JUNE	1	0	0	0	APR/MAY/JUNE	37	44	48	-4

GOALS AND ACTUAL NEW CLUBS CUMULATIVE



GOALS AND ACTUAL MEMBERS CUMULATIVE



DROPPED CLUBS: 0	39 CLUBS OF 50 ADDED 1 OR MORE NEW MEMBERS	<u>GENDER DISTRIBUTION</u>	
<u>DROPPED MEMBERS</u>		MALE	1,433 (77.42%)
DECEASED	26	FEMALE	418 (22.58%)
CLUB CANCELLED	0	FAMILY UNIT MEMBERS 297 HEAD OF HOUSEHOLD 146 NON-HEAD OF HOUSEHOLD 151	
OTHER	143		
TOTAL	169		
CLICK HERE FOR HEALTH ASSESSMENT DATA			